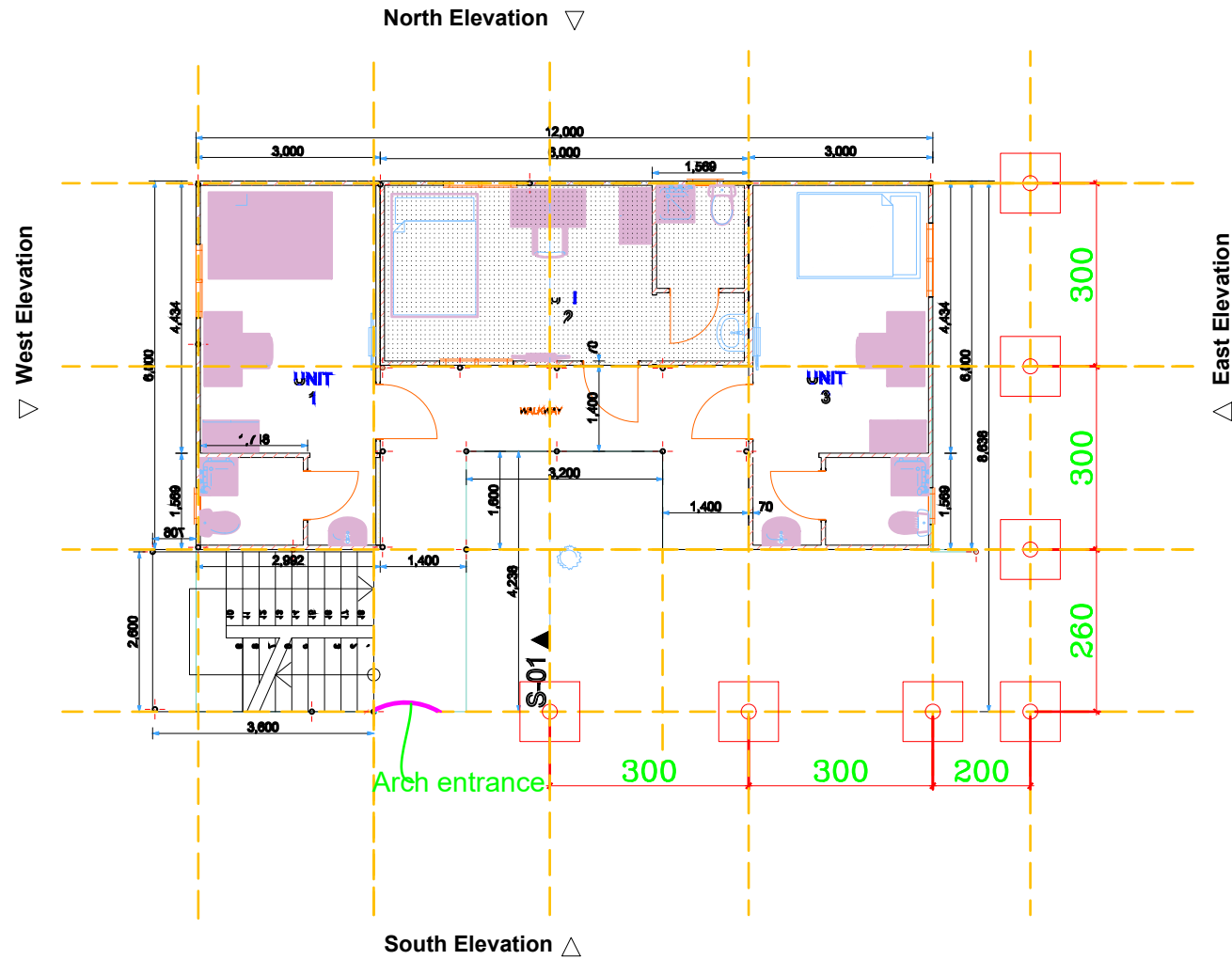


GROUND FLOOR PLAN OFFICE CONTAINER IN THE OFFICE



GROUND FLOOR PLAN PREFAB IN THE GH

- NOTES:
1. All dimension in mm
  2. Do not scale. Use indicated dimensions
  3. All concrete works must be cured for a minimum of seven days
  4. Excavation works must be approved prior to backfill
  5. All waste water conduits must be encased in concrete before backfill
  6. All metal surfaces MUST be painted with antirust paint. Welding joints must be smooth and well filled

Revision History			
RevID	ChID	Change Name	Date

Company Title

**UNHCR DARFUR OPERATION**  
 AL MATAR AREA  
 NEAR SAUDI HOSPITAL  
 EL-FASHER, NORTH DARFUR

**Protection of the first floor in office container and GH prefab, El Fasher North Darfur State**

Drawing Name **FOUNDATION & CHS CLMN LAYOUT PLAN**

Drawing Status **FOR TENDER**

Designed by **M. Esam** Date **March, 2023**

Checked by **M. Esam** Date

Drawing Scale **AS INDICATED**

PROJECT NO: **ND-2023-001** Revision